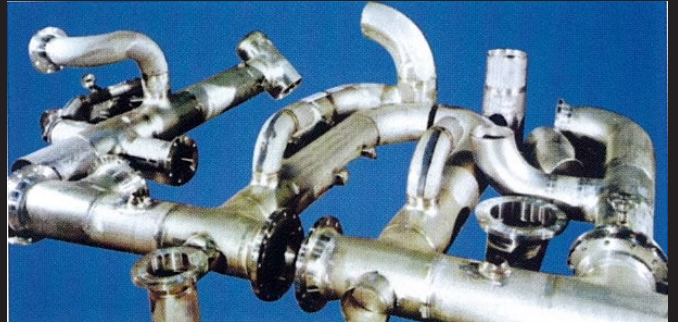
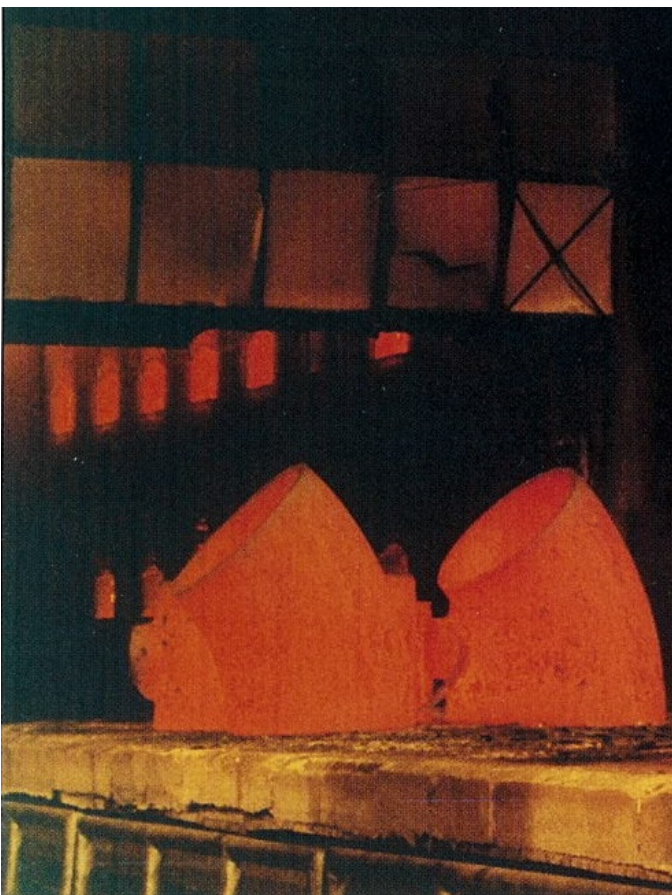
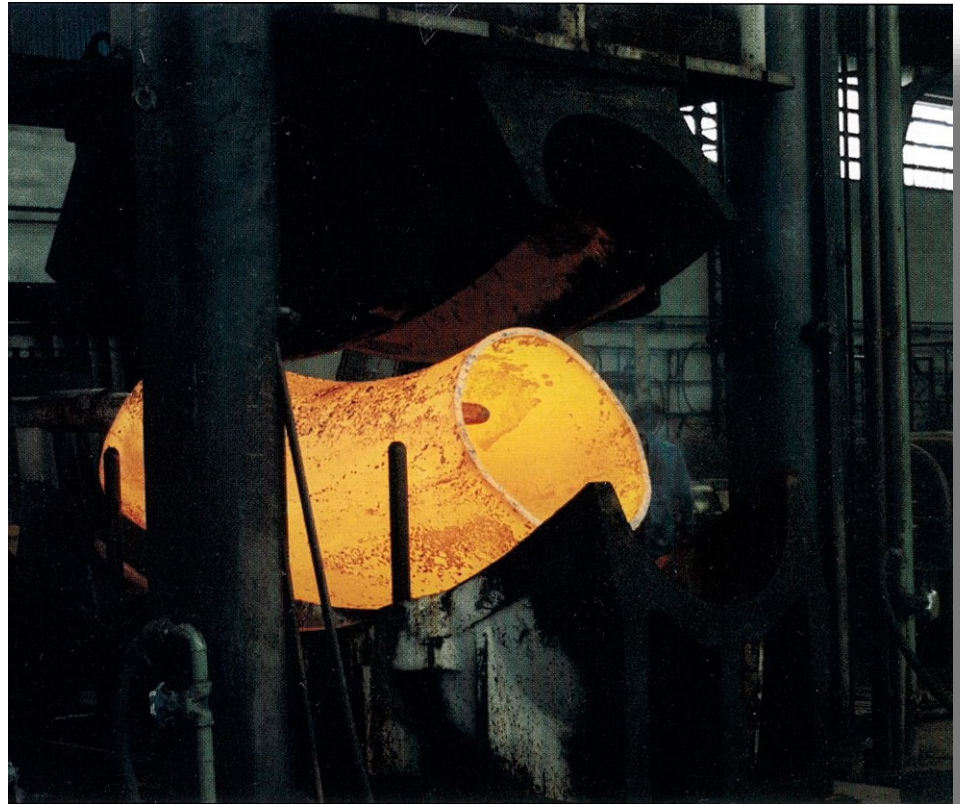


FITTINGS



FORMING OF BW FITTINGS

VERTICAL DYE



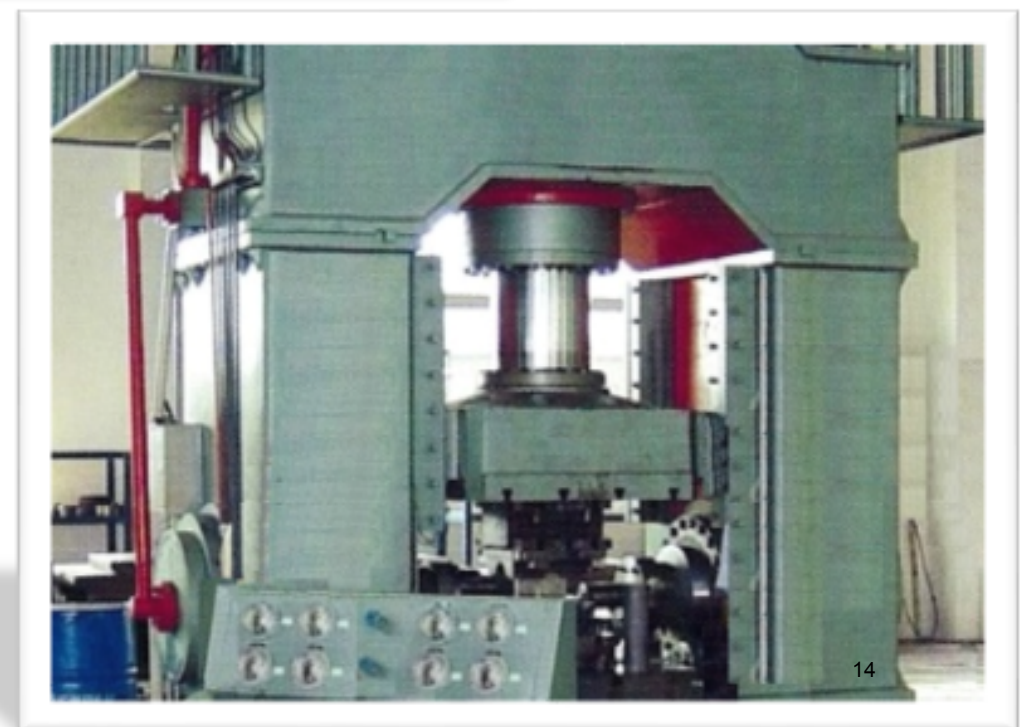
HEAT TREATMENT
(NORMALIZING AT 910° C)



COLD FORMING OF ELBOW

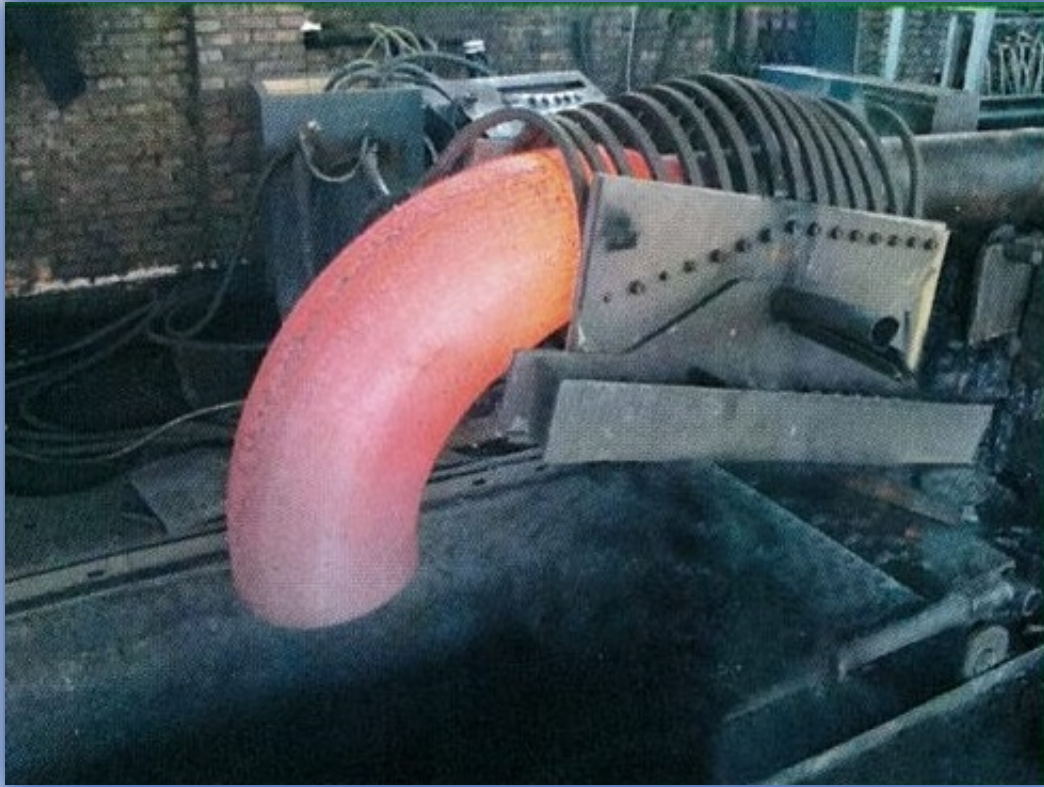


TEE COLD FORMING



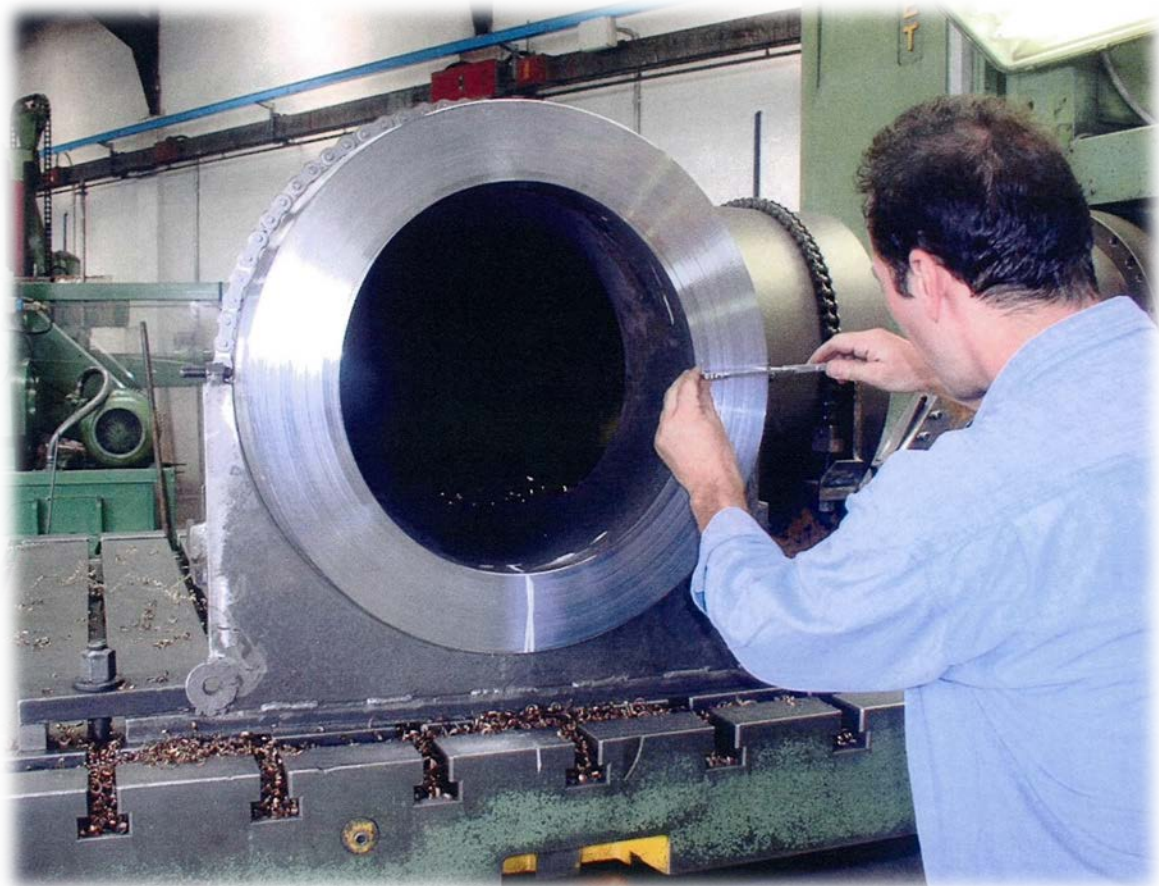
FORMING OF BW FITTINGS

INDUCTION ELBOW



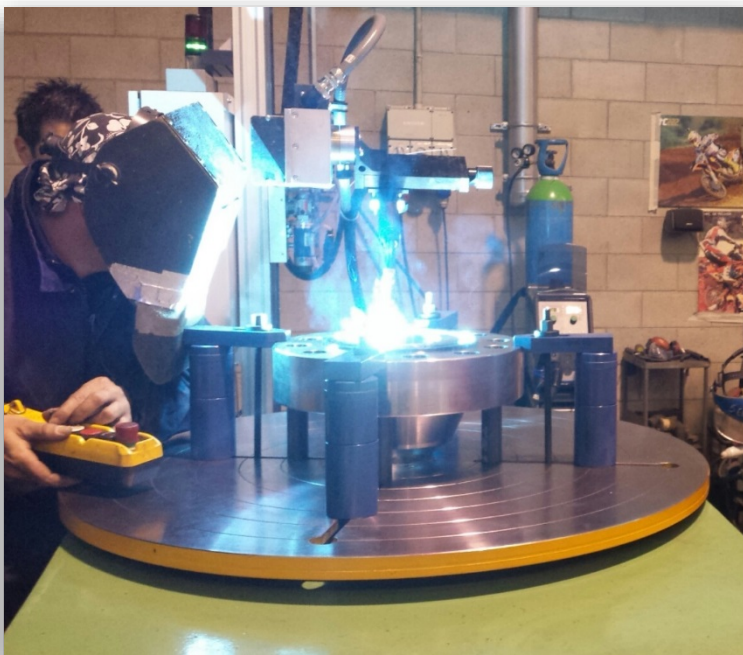
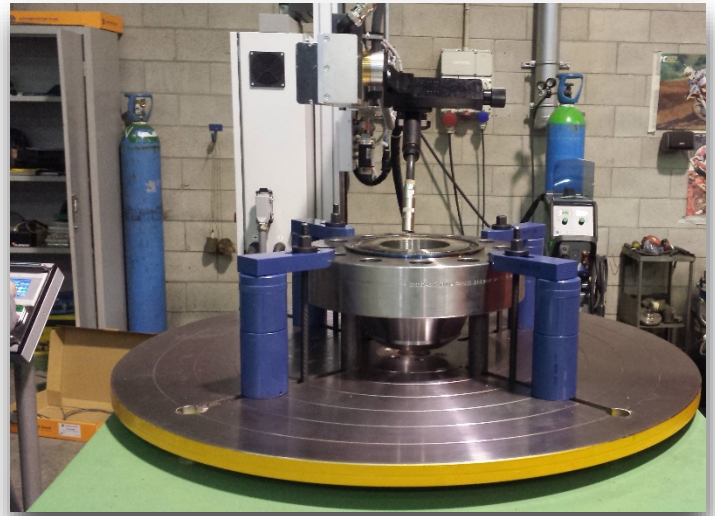
FORMING OF BW FITTINGS

BEVELING ON HEAVY WALL - LR ELBOW



OVERLAY CLADDING

MANUAL OR AUTOMATIC CLADDING

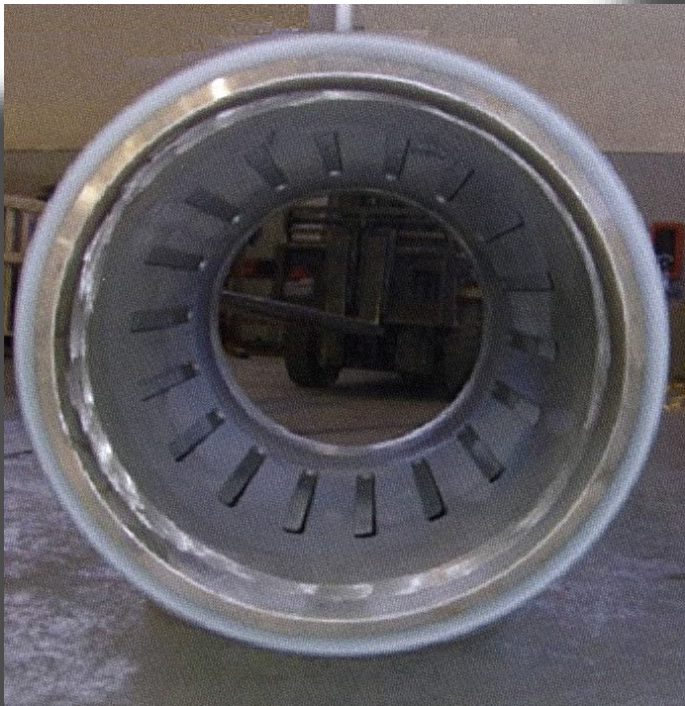
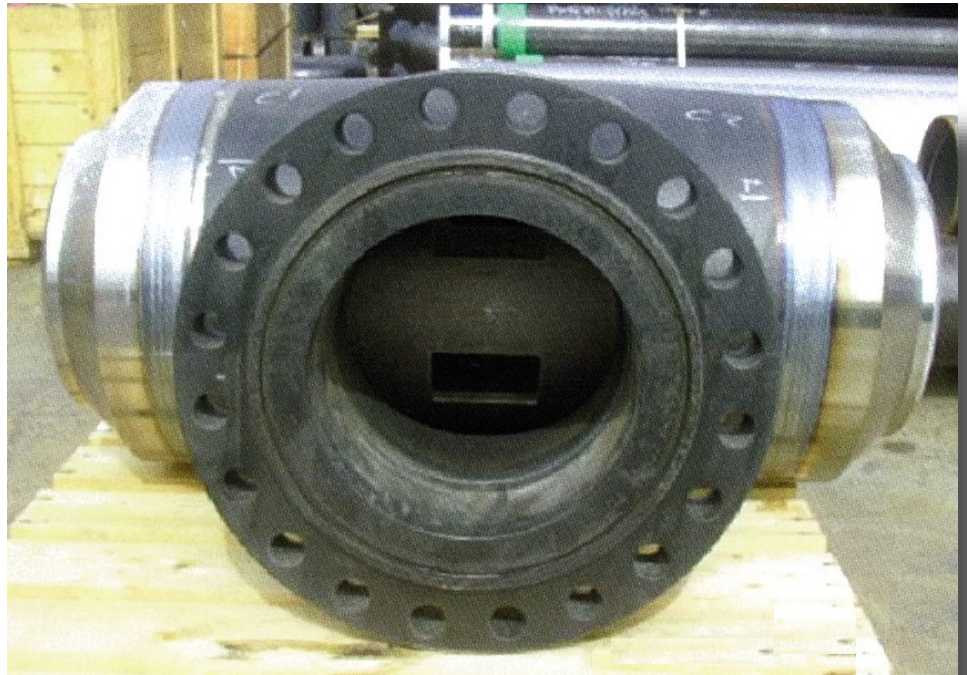


SPECIAL COATING

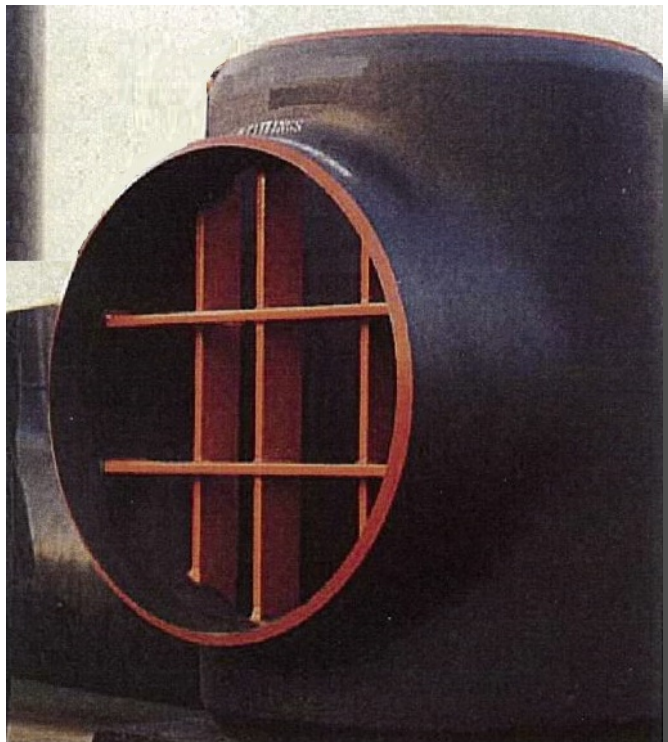


BW FITTINGS SPECIAL ITEM

***FLANGED
FLOW TEE
24" x 18"
WTH 40mm***

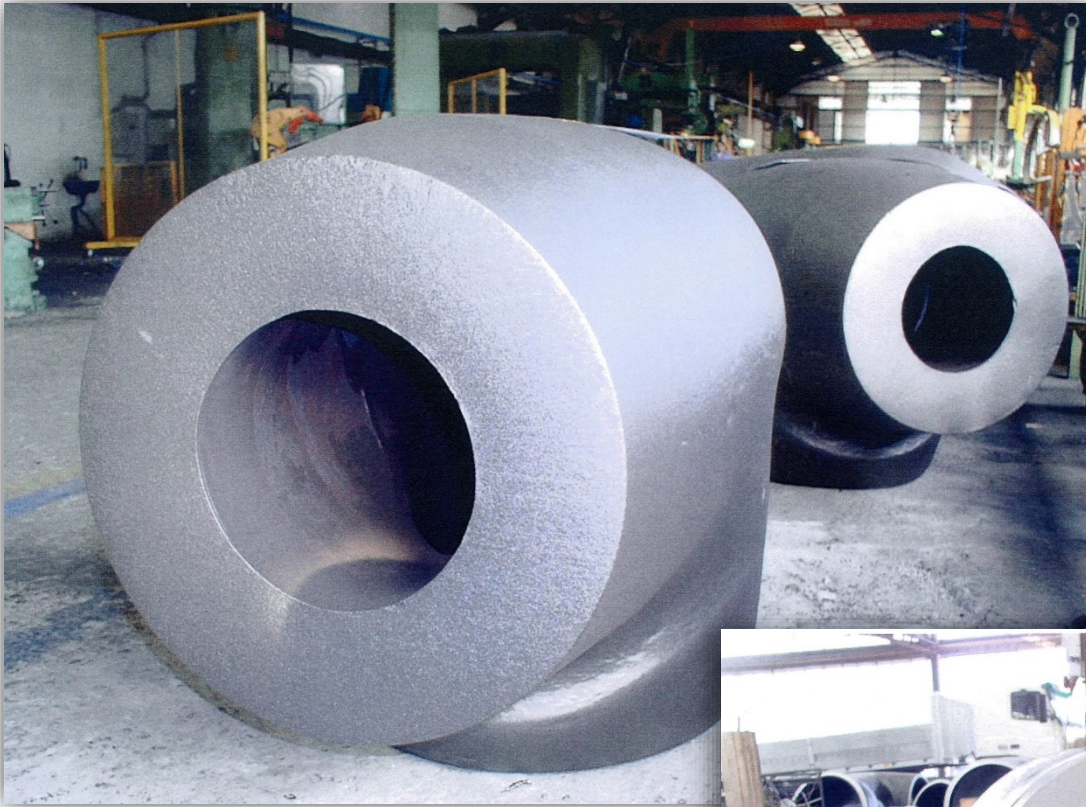


***FLOW TEE
36" x 30"
WTH 50mm***

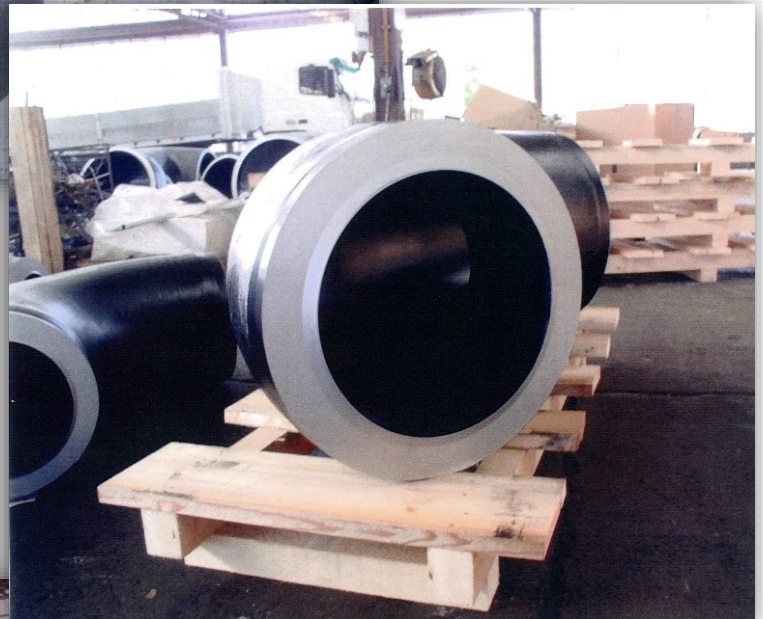


BARRED TEE

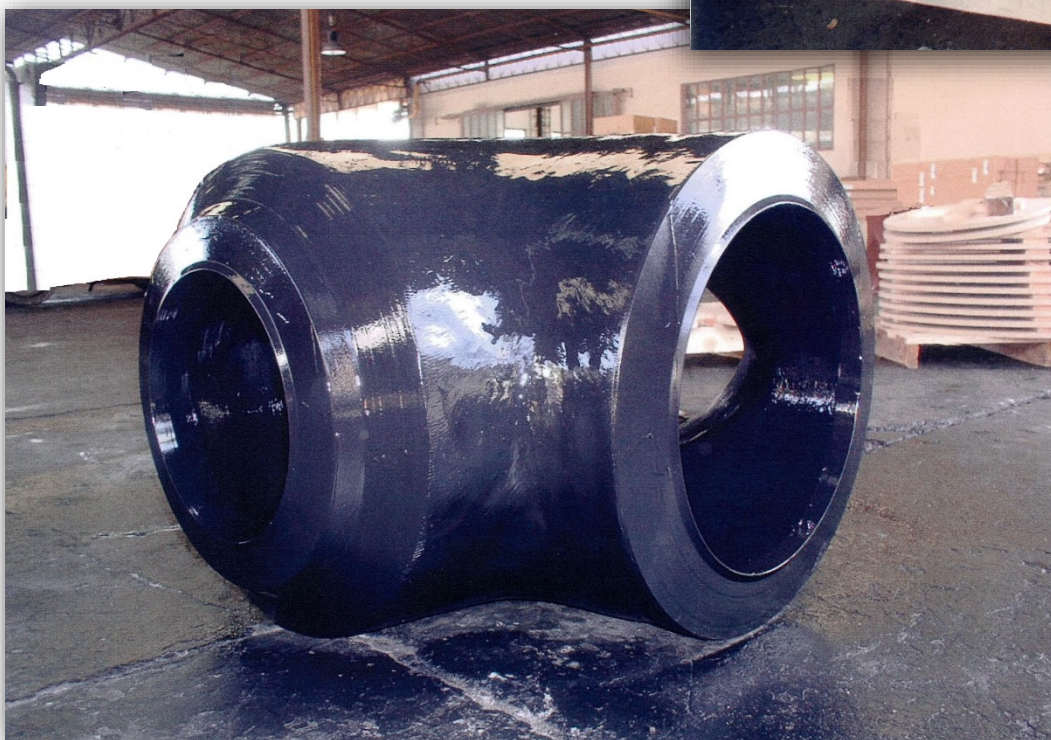
BW FITTINGS SPECIAL ITEMS



FORGED TEE
(OD 30" WTH 150 mm)
MAT. WP91

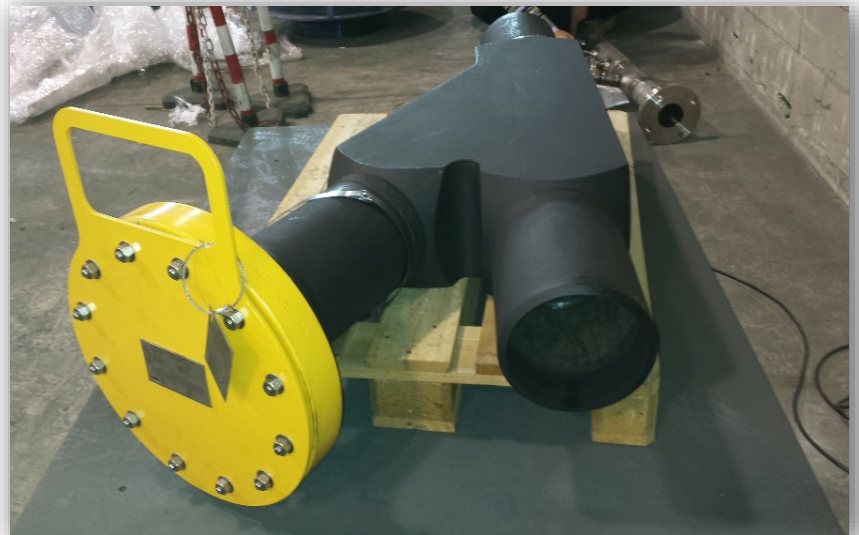


ELBOW 90° LR
(OD 24" WTH 110 mm)



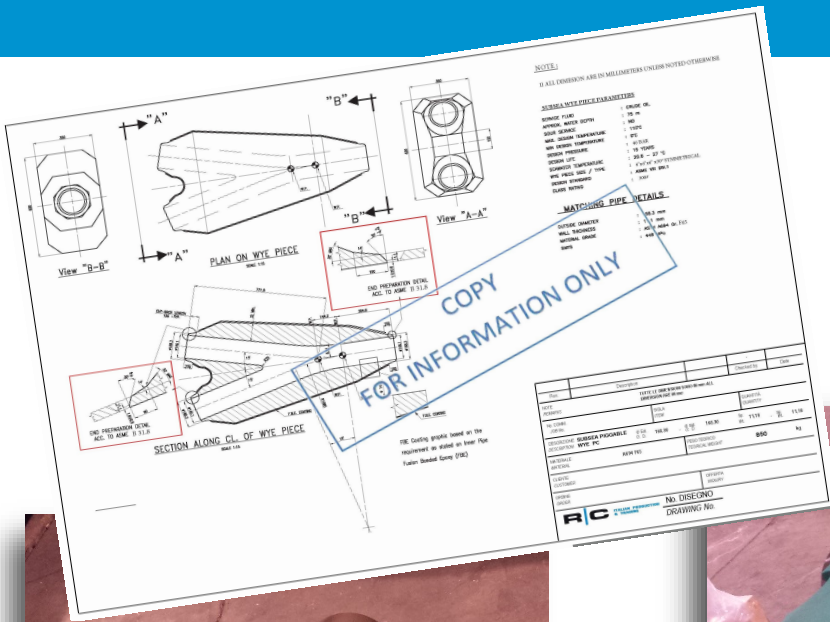
TEE
(WTH 150 mm)
AFTER BEVELING

SPECIAL ITEMS

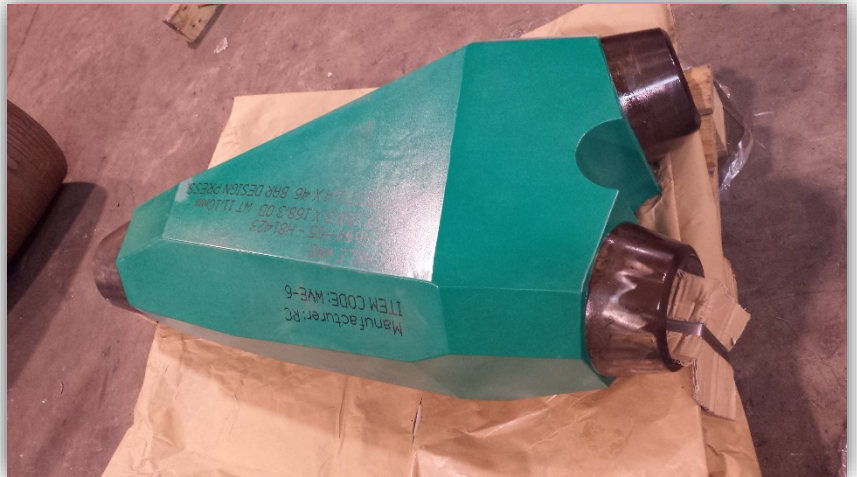


*LATERAL TEE 30° 8" OD
ASSEMBLED WITH HOT TAP
FLANGE*

SPECIAL ITEMS



WYE TEE 6"x 6" OD MATERIAL A694 WPHY65



**EXTRA
FURNACE
HEAT
TREATMENT
ON MANIFOLD
WELD**

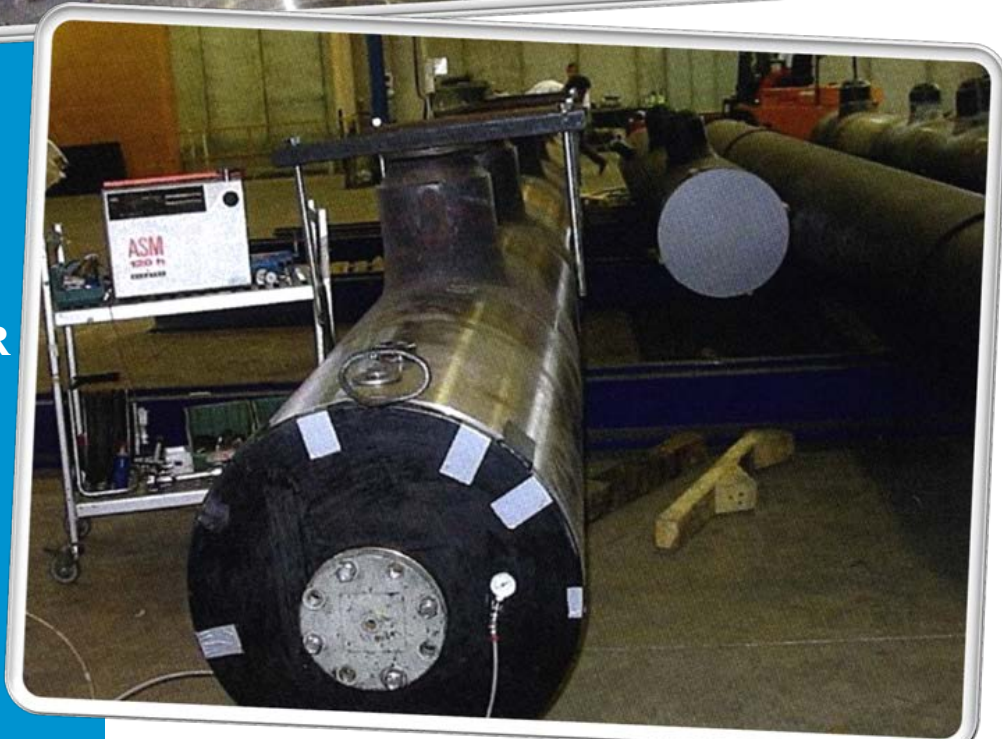


**WELD ON
MANIFOLD NOZZLE**

**(WTH 90mm
MAT A350 LF2)**



**MASS
SPECTROMETER
LEAK TEST ON
MANIFOLD**



SPECIAL ITEMS



METER BEND

*MAT. AISI 316L
82" OD WTh 25 mm*



SPECIAL ITEMS



COLD EXTRUDED MANIFOLD



PACKING FOR DELIVERY

RC PROJECT REFERENCE LIST

YEAR	CUSTOMER	ENGINEERING	USER/OWNER	LOCATION	PROJECT NAME	INDUSTRY	SIZE RANGE	MATERIAL	PRODUCTS
2010	RELIANCE PETROLEUM	BECHTEL/INRADA	RELIANCE PETROLEUM	INDIA	REFINERY REVAMPING	REFINERY	12" to 72"	WPB IFR	BW Fittings
2010	TIANJIN PIPE INTERNATIONAL ECONOMIC	UNKNOWN	TIANJIN PIPE INTERNATIONAL ECONOMIC	CHINA	POWER PLANT	POWER PLANT	12" to 40"	WP92 - WP66 - WPC Fittings	Y-pieces, Laterals 45° BW Fittings
2010	DODD SAL OMAN	DODD SAL U.A.E.	RASSGAS	OMAN	RAS LAFRAN COMMON COOLING SEAWATER SYSTEM PH. II	GAS PLANT	24"	WPC - WPB	BW Fittings
2010	GERAB	TATA CHEMICALS INDIA	ENOC	U.A.EMIRATES	ENOC DISTRIBUTION	OIL TRANSPORT	2" - 32"	WP316L - WPB	BW Fittings
2010	KADDA'S	BABCOCK U.A.E.	U.A.E.	U.A.EMIRATES	UNKNOWN	WATER PIPELINE	8" - 22"	WPB	BW Fittings
2010	FITTINGS & FLANSCHEN	UNDE GERMANY	E-AGRUM	EGYPT	AMMONIA PLANT	CHEMICAL & FERTILIZER	12" to 44"	WP304L - WP316L WPB - WPL6	BW Fittings
2010	CHINA INTERNATIONAL TENDERING CO. (ITC)	GENERTEC	UNKNOWN	CHINA	POWER PLANT	POWER PLANT	1" & 32" up to 60mm Thk	WP92	BW Fittings
2010	DYLAN	TECHINT ENG. & CONSTR.	EGYPTIAN METHANEX METHANOL COMPANY	EGYPT	DAIMIETTA METHANEX METHANOL COMPLEX	AROMATICS COMPLEX	3" - 36"	WPB - WP11	BW Fittings
2010	ALSTOM POWER ITALIA	GEC ALSTOM/ALSTOM POWER ITALIA	VATTENFALL	DENMARK	AMAGER POWER PLANT	POWER PLANT	12" to 20"	WP304L - WPB	Pipes, Fittings & Flanges
2011	RACCOR TUBI	TECHNIP KTI	LOTOS	POLAND	GDANSK REFINERY	REFINERY	2" to 28"	WPB WPL6 both NACE & HIC	Split Crosses, BW Fittings
2011	SID SA	FOSTER WHEELER BERIA	ENAGAS	SPAIN	REGASIFICATION PLANT OF CARTAGENA	LIQUID NATURAL GAS (LNG)	10" to 36"	WPHY60 WPHY70	BW Fittings
2011	SINGLE BUOY MOORINGS	SINGLE BUOY MOORINGS	CABINDA GULF OIL COMPANY (CABGOC)	ANGOLA	CALM MOORING SYSTEM BERTH 4	OIL OFFSHORE PLANT & PIPELINE	2" TO 42"	WPB - WPHY52	BW Fittings
2011	EUROSOURCE	FOSTER WHEELER & WORLEY PARSON	MITSU ENGINEERING & SHIPBUILDING (MES)	SINGAPORE	SINGAPORE PARALLEL TRAIN SOP2	INTEGRATED PETROCHEMICAL	14" & 18"	WP304H	BW Fittings
2011	CONTINENTAL FITTINGS & FLANGES	NUOVO PIGNONE	PETROBRAS UN-RIO / ATR-MLS	BRASIL	GAS COMPRESSION MODULES - MARLIM SULF FIELD DEVELOPMENT	WELLS FOR OIL & NATURAL GAS OFF SHORE	12" to 26"	WPB	BW Fittings
2011	KURVERS PROJECTS	BATEMAN UTWIN	SABIC & MAADEN	SAUDI ARABIA	PHOSPHORIC ACID PLANT	CHEMICAL & FERTILIZER	2" to 46"	WPB	BW Fittings
2011	BEIJING GUODIAN FUTONG SCIENCE	B.I.N.E.	BEIJING ELECTRIC POWER	CHINA	POWER PLANT	POWER PLANT	8 1/2" up to 100mm Thk	WP36	BW Fittings
2011	A.R. TECHNOLOGY	PETROJET / PETROBEL	BELAYIM PETROLEUM CO.	EGYPT	EL GAMIL PLANT UPGRADING	PETROCHEMICAL	30" & 36"	WPB	Pipes, Fittings
2012	A.B.B. PROCESS SOLUTIONS ITALY	A.B.B. ITALY	SONATRACH	ALGERIA	BOOSTING HASSI R'MEL PHASE 2	GAS PIPELINE	12" to 40"	WPC - WPB - WP304L - WPHY60	BW Fittings
2012	A.B.B. PROCESS SOLUTIONS ITALY	A.B.B. ITALY	SONATRACH	ALGERIA	NK1 TO SKIDA	GAS PIPELINE	12" to 40"	WPC - WPB - WP316L - WPHY60	BW Fittings
2012	ICARUS	ENCANA / SBM	CANADA NOVA SCOTIA OFFSHORE PETROLEUM	CANADA	MOBILE OFFSHORE PRODUCTION UNIT (MOPU) DEEP PANUKE	OIL & GAS OFFSHORE	8" to 18"	WPHY65 + 3MM INCONEL 625	Weld Overlay Fittings
2012	ICARUS	TECKNIP KTI / INA	INDUSTRIA NAFT 4.6 (INA)	CR OATIA	RUEKA HYDROCRACKER COMPLEXES	REFINERY	12" to 32"	WP304L - WP11 - WPL6	BW Fittings
2013		CIGNUS PROJECT			CIGNUS PROJECT		6" - 12"	DUPLX	3D & 5D BENDS
2013	KIO - AGIP KCO	KIO	AGIP KCO	KAZAKHSTAN	KARACHAGANAK PROJECT	GAS PIPELINE	1" - 8"	WPL6	BW & FORGED FITTINGS, FLANGES
2013	TENOVA ITALIA	TENOVA	NINAS SIDERURGICA	BRASIL	COSIPA WOLKING BEAM FURNACE 400/440 TH	FITTINGS FOR SKID	3" - 5"	WPB-200404L	BW FITTINGS
2013	CONTINENTAL FITTINGS & FLANGES	TECHNIP KTI	Mediterranean Gas Pipeline LTD - MERHAY GROUP - PTT PUBLIC Co. Ltd	EGYPT/ ISRAEL	EAST MEDITERRANEAN GAS COMPANY (EMG) EXPANSION PROJECT	GAS PIPELINE	6" - 26"	WPHY52 - WPHY65	BW FITTINGS
2013	ALMESA	COBRASENER	TORRESOLENERGY	SPAIN	VALLE	SOLAR THERMAL	1" - 30"	A334 WPB	BW FITTINGS
2014	AMEC	AMEC	GDF SUEZ	NORTH SEA	CYGNUS PROJECT	OFF SHORE	6" - 12"	DUPLX	5D & 3D BENDS & TANGENTS
2014	MCCOR ENGINEERING	PTSC / CUULONAS			STV SOUTH WEST PROJECT	PIPELINE	6" - 10"	CARBON STEEL A680 WPHY65	BARRED TEES
2014	MCCOR ENGINEERING		PTTEP				6"	CARBON STEEL ASTM A684 F42	INTEGRATED WYE TEE WITH PUP PIECE AND HOT TAP FLANGE
2014	MCCOR ENGINEERING	PETRONAS / CARIGALI			PCSB TGA ST OSC. GPPA		24" - 26" - 36"	A333 Gr. B / WPL6 / LF2	BW FITTINGS / FLANGES / FORGED SMLS PIPE & WELDED PIPE
2014	MCCOR ENGINEERING	MUBADALA PET.		GOLF OF THAILAND	NONG YAO FIELD DEVELOPMENT PROJ		6"	A694 F65 - FBE COATED	PIGGABLE WYE

Last update: 10th September 2014